

Post-Acute Care

Background Screening and Identity Verification

Post-acute care providers face high turnover and complex, state-by-state compliance. First Advantage's Post-Acute Care Center of Excellence (COE) helps you to hire faster with automated background checks and drug screenings — reducing delays, helping with compliance, and letting your team focus on care, not paperwork.

Hire Confidently and Stay Compliant

- **State-by-State Compliance**
Automated registry checks, fingerprinting, and licensure workflows built to meet complex regulations.
- **Mobile-First Candidate Experience**
Streamlined onboarding for remote and field-based caregivers.
- **Bulk Hiring Support**
A centralized dashboard simplifies multi-site hiring and staffing surges.

Why First Advantage?

We help long-term care providers hire faster and smarter, stay compliant, and reduce turnover.

- Dedicated healthcare support team
- Seamless integration with HRIS and ATS platforms
- Scalable for multi-state and multi-facility operations



Delivering Real Outcomes for Post-Acute Care¹

90%

of U.S. criminal screens close on Day 1

500%

growth in identity-first customer adoption since 2022

90%

of education verifications completed by Day 3

24,000

drug test sites across the U.S.

ACADIA
HEALTHCARE®

"We get things done from one place, so we get candidates in the door faster."

– Director of Talent Acquisition, Acadia Healthcare

¹ First Advantage, as of 12/31/2024.

Healthcare Hiring Solutions

- ✓ **Drug and Occupational Health Screening**
Get consistent coverage wherever you operate with fast and expansive drug tests and occupational health screenings that draw from over 24,000 test sites nationwide.¹
- ✓ **Fingerprinting**
As approved contractors with the FBI, AHCA, and NMLS, our national network is equipped to capture and submit electronic fingerprints using digital technology, delivering turnaround times of less than 24 hours.
- ✓ **Global Background Checks**
With thorough background checks conducted in over 200 countries and territories, supported by regional experts, you can confidently move candidates forward.
- ✓ **Clinical Concierge**
Tailored to the unique program requirements of healthcare organizations, we coordinate candidate services end-to-end, reducing turnaround times from 16 days to as little as 4 to 7 days.
- ✓ **Identity Verification**
Use identity first services, available ahead of background screening or at other points in time, to help verify identity and detect potential fraudulent activity.
- ✓ **Criminal Background Checks**
Access fast, consistent results for background checks and a view of a candidate's history so you can hire with confidence.

Seamless Integrations

Streamline hiring productivity with screening that connects directly to the HR tools you already use.



dayforce

PageUp

UKG

symplr

icims



JOZZHR | LEVER | JOBVITE
by employ

ORACLE | Partner

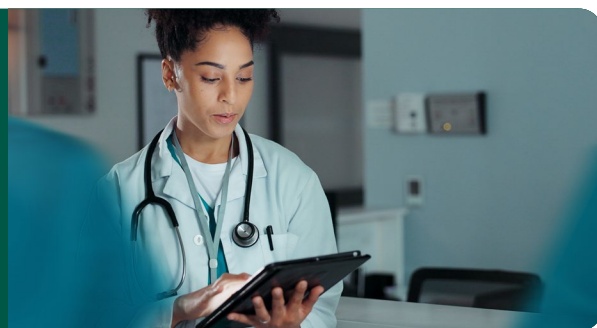
PARADOX

SAP SuccessFactors

Get Started Today

We'll help you hire and start workers sooner while mitigating risk and maintaining compliance.

Contact us →



¹ First Advantage, as of 12/31/2024. Note: Not all services are available at all locations.

This content is offered for informational purposes only. First Advantage is not a law firm, and this content does not, and is not intended to, constitute legal advice. Information in this may not constitute the most up-to-date legal or other information. Readers of this content should contact their own legal advisors concerning their particular circumstances. No reader, or user of this content, should act or refrain from acting on the basis of information in this content. Only your individual attorney or legal advisor can provide assurances that the information contained herein – and your interpretation of it – is applicable or appropriate to your particular situation. Use of, and access to, this content does not create an attorney-client relationship between the reader or user of this presentation and First Advantage.